

Technical data sheet

Flow control valve BG12



Advantages

- + Flow from 10 cm³/min
- + Reproducibility even with low flow rates
- + Fluid flow can be controlled nearly independently of pressure and viscosity
- + Sensitive adjustment

Technical data

General

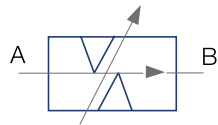
Type of valve	gap-type throttle valve
Operation	rotary knob
Angle of rotation, 1 rotation	330°
Valve mounting	thread M30x1.5
Connections of ports	mounting hole
Mounting position	mountable in any position
Ambient temperature	-5°C to +50°C
Mass valve	0,6 kg

Hydraulic

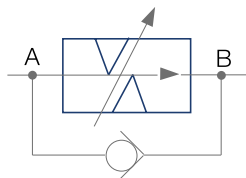
Operation pressure A, B	max. 150 bar
Hydraulic oil temperature	-10 to +70 °C
Viscosity range	10 to 300 mm ² /s
Rate of flow	max. 6 l/min

Symbol

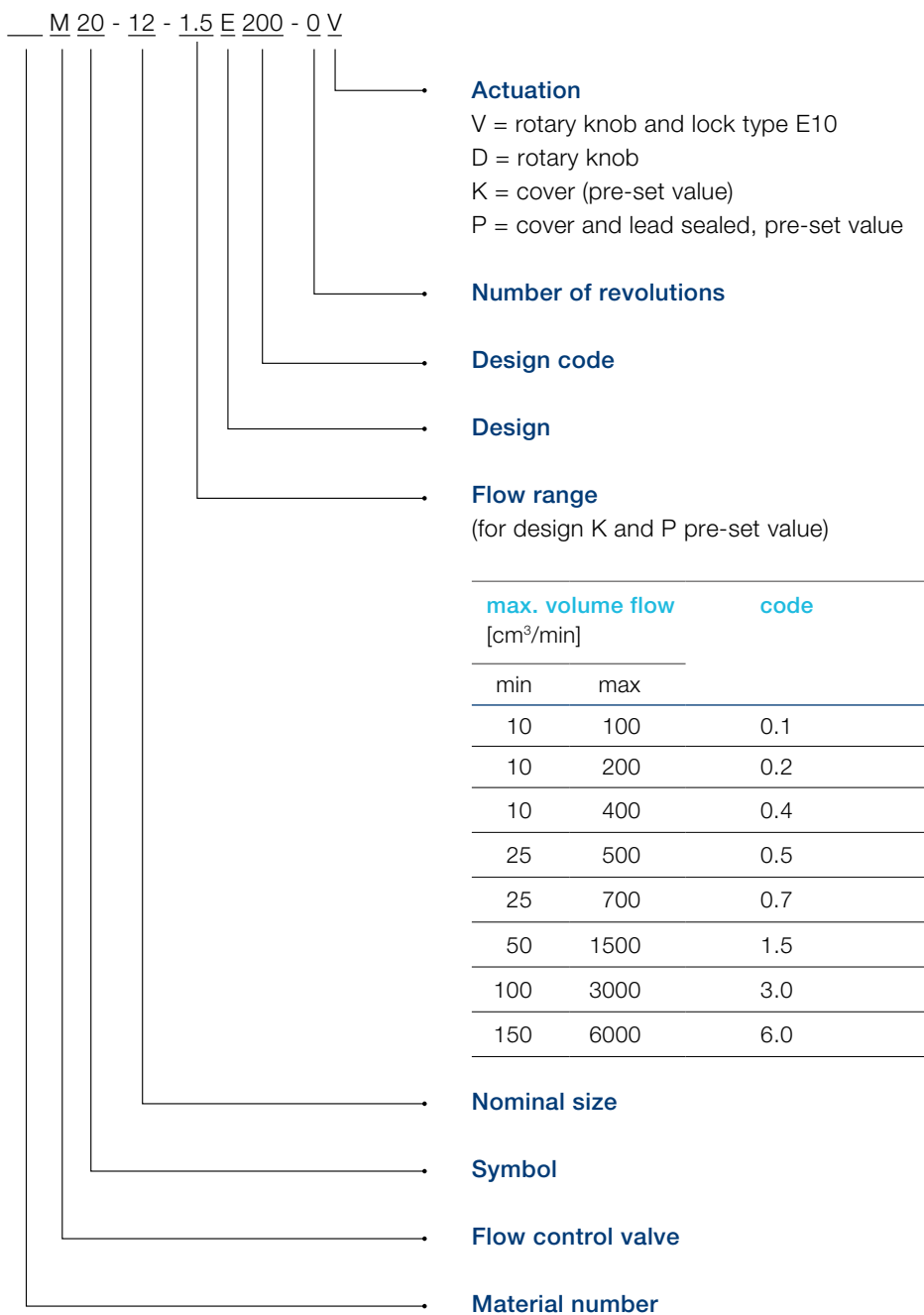
20



21



Type code



Voith Group
 St. Poeltener Str. 43
 89522 Heidenheim
 Germany

Contact:
 Phone +49 7152 992 3
 sales-rut@voith.com

www.voith.com/hydraulics



VOITH
 Inspiring Technology
 for Generations